

Mastery of Temperature for Great Taste

SONOFF BBQ Meat Thermometer BMT01





Remote Monitoring



Temp. Alert



Easy to Use



Real-Time Chart



Timer Reminder



Reading Switch

Accurately Monitor Meat Temperature

Simply insert the probe into the meat, and you can monitor the temperature in real-time. The eWeLink app will automatically log a temperature chart to track temperature changes.



Reassuring in Every Aspect



Fast Data Refresh

Refreshes every 2 seconds, quickly displaying the latest temperature on the screen.



Accurate Measurement

Accuracy within 180°F/100°C is $\pm 1.8^{\circ}\text{F}/1^{\circ}\text{C}$ allowing for precise detection of the internal temperature of the meat.



Reliable Connection

The device and the phone can be stably connected within a range of 328ft/100m.



Wide Temperature Range

The probe can detect temperatures up to 300°C/572°F, suitable for high temperatures.



Lasting Power Supply

Powered by two AAA batteries, it supports over 180 grilling sessions, each lasting 2 hours.



Food Grade Certification

Safe to insert into food for grilling and reusable.

*The above measurement data is obtained from laboratory testing.

Grilling Assistant for Any Occasion

Whether for a party barbecue or culinary, BMT01 helps you control the heat perfectly. It also makes a great gift for family or friends, helping them grill delicious food with ease.



Camping picnic



Family dinner



Daily cooking



Grill



Griddle



Hob



Oven



*The package includes two probes. Additional probes can be purchased to expand to four.

Receive an Alert at the Target Temperature

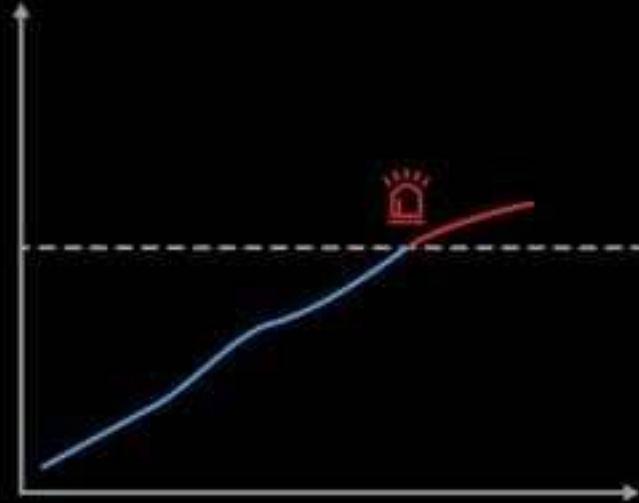
Set a target temperature for the food being grilled. When the temperature is reached, both the device and your phone will sound an alarm, reminding you to return to the grill and remove the food.



Monitored in Two Ways

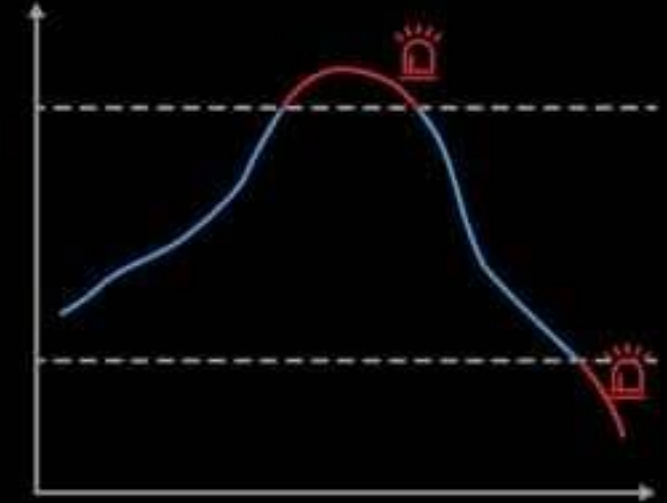
Meat Temperature

Alert when the target temperature is reached.



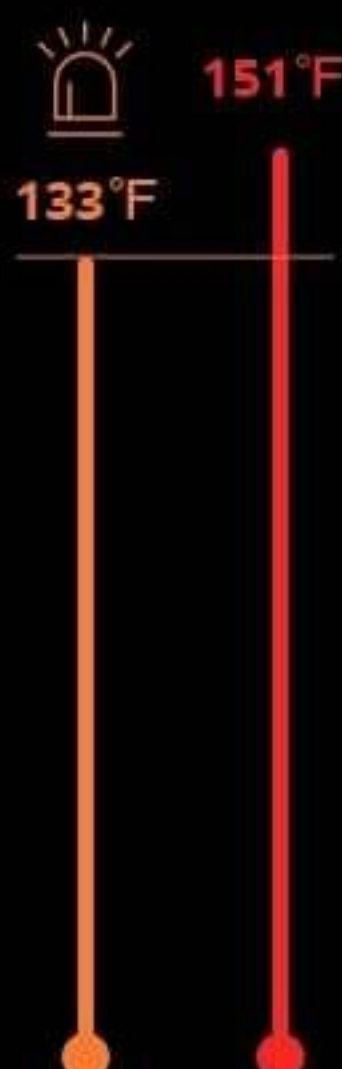
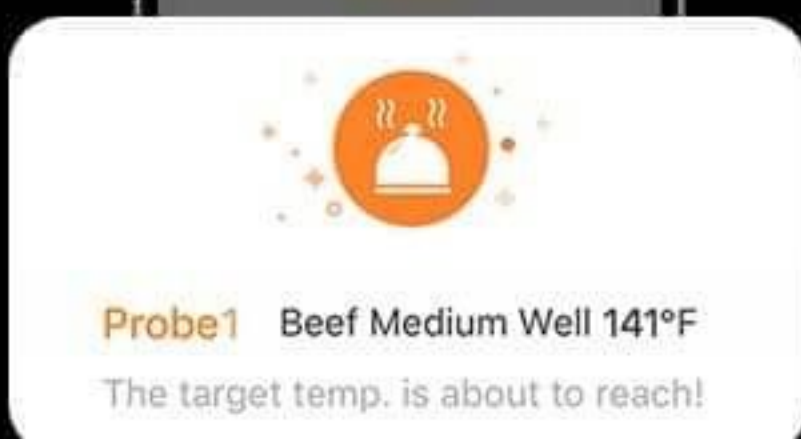
Oven Temperature

Alert when the temperature goes out of range.



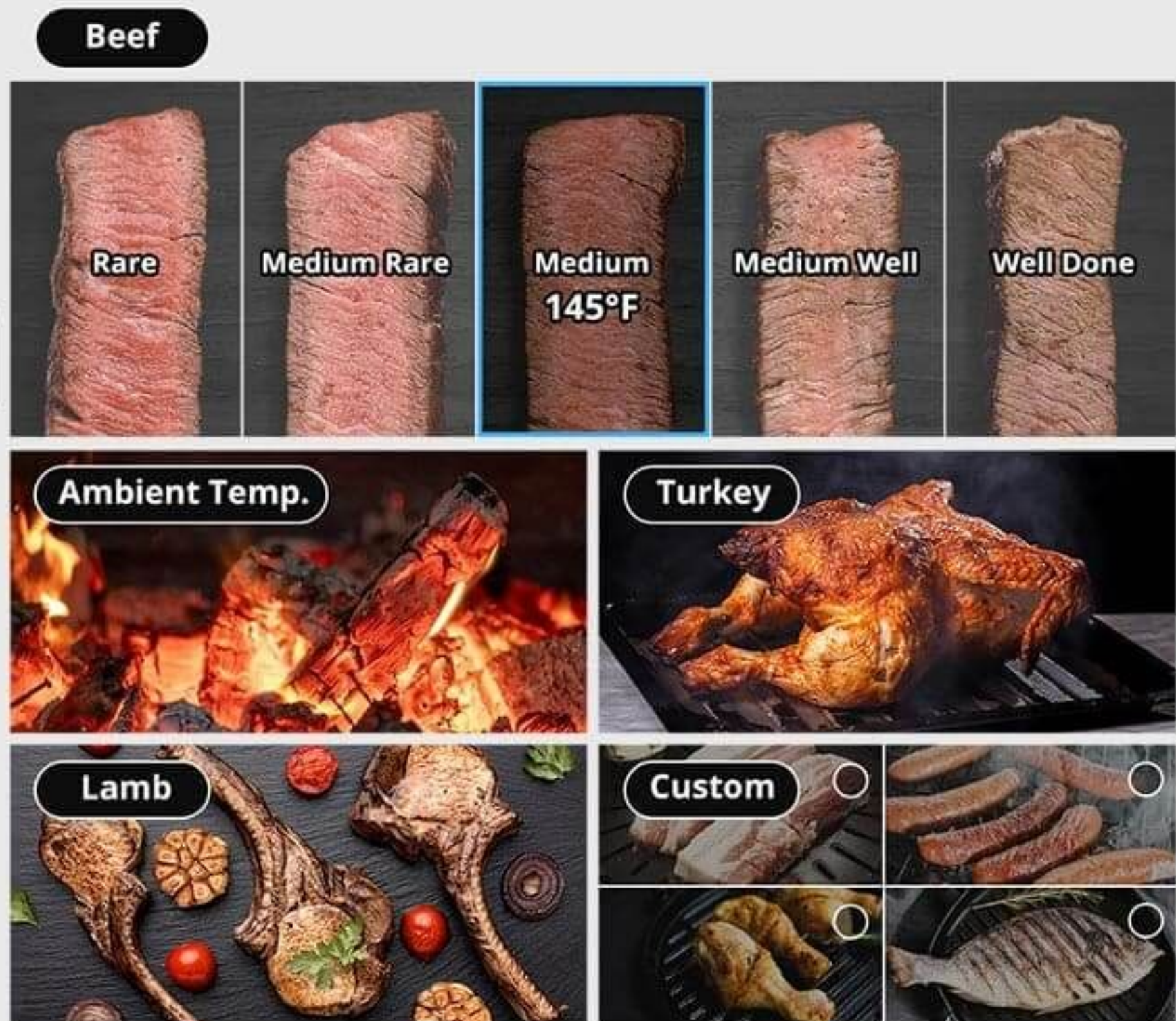
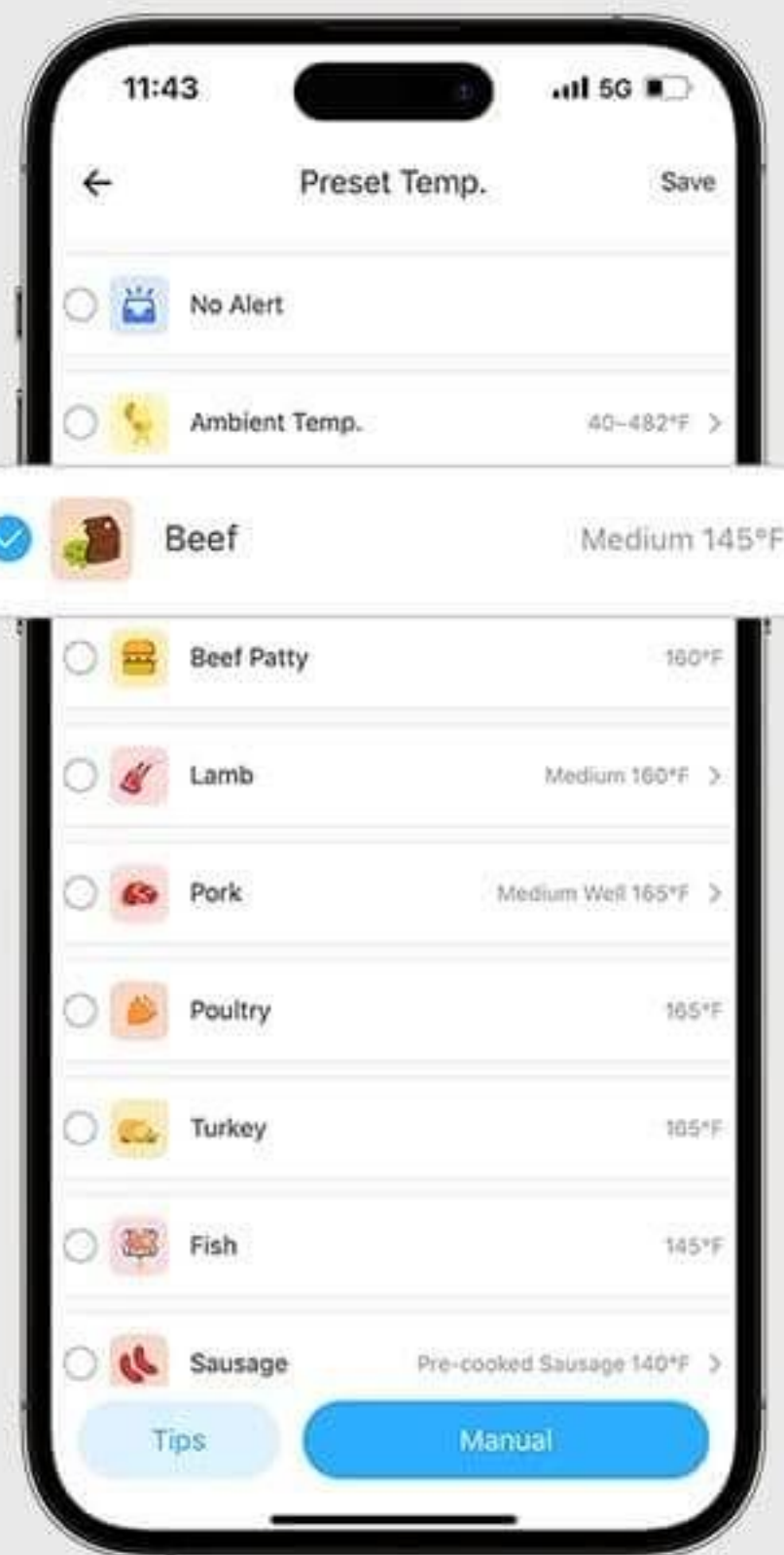
Early Alert to Prepare in Advance

Want to return to the grill early for plating? Or let the beef rest for a better taste? Set the Temp. Pre-alert will notify you before reaching the target temperature, giving you more time to prepare.



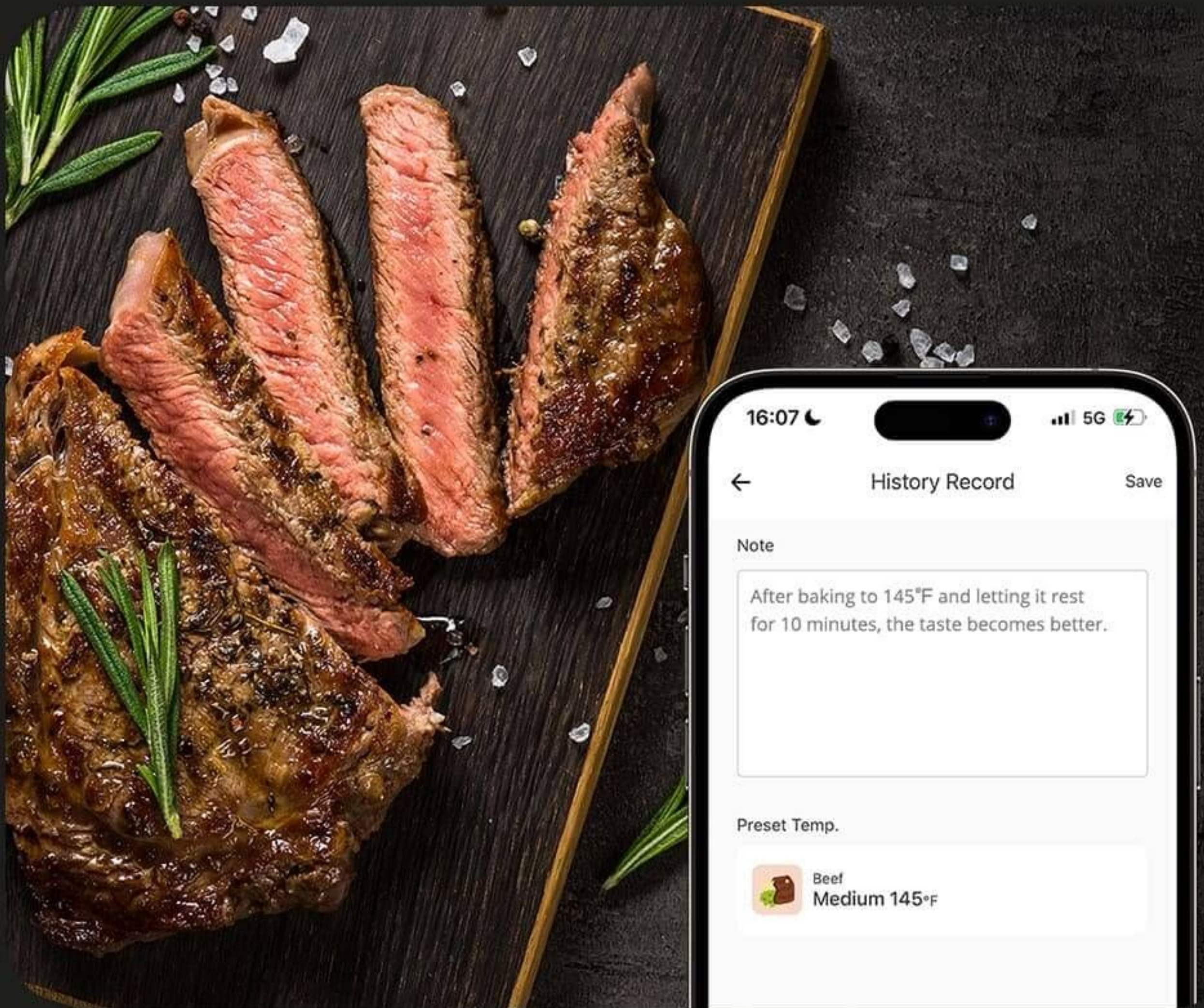
Provides You Grilling Recommendations

The app provides reference temperatures and tips for different meat, to help you achieve the perfect cooking. You can also customize settings to find the temperature and taste that suits you best.



Save Every Grilling Record

eWeLink APP will record the temperature chart for each grilling for you to jot down your notes. Refine your grilling technique and improve the perfect method with each note.



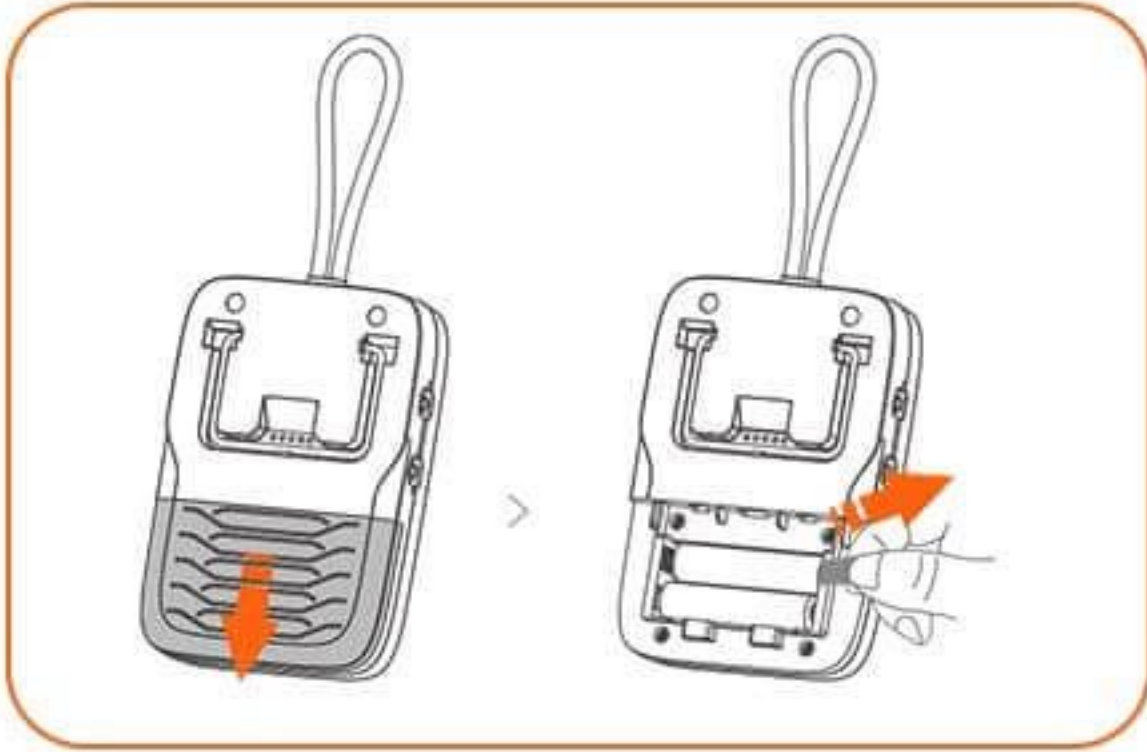
Timer Reminder

You can set a timer in the app to let your freshly grilled meat rest for a specified time. When the time is up, you'll receive a reminder, and your meat will be ready to enjoy.

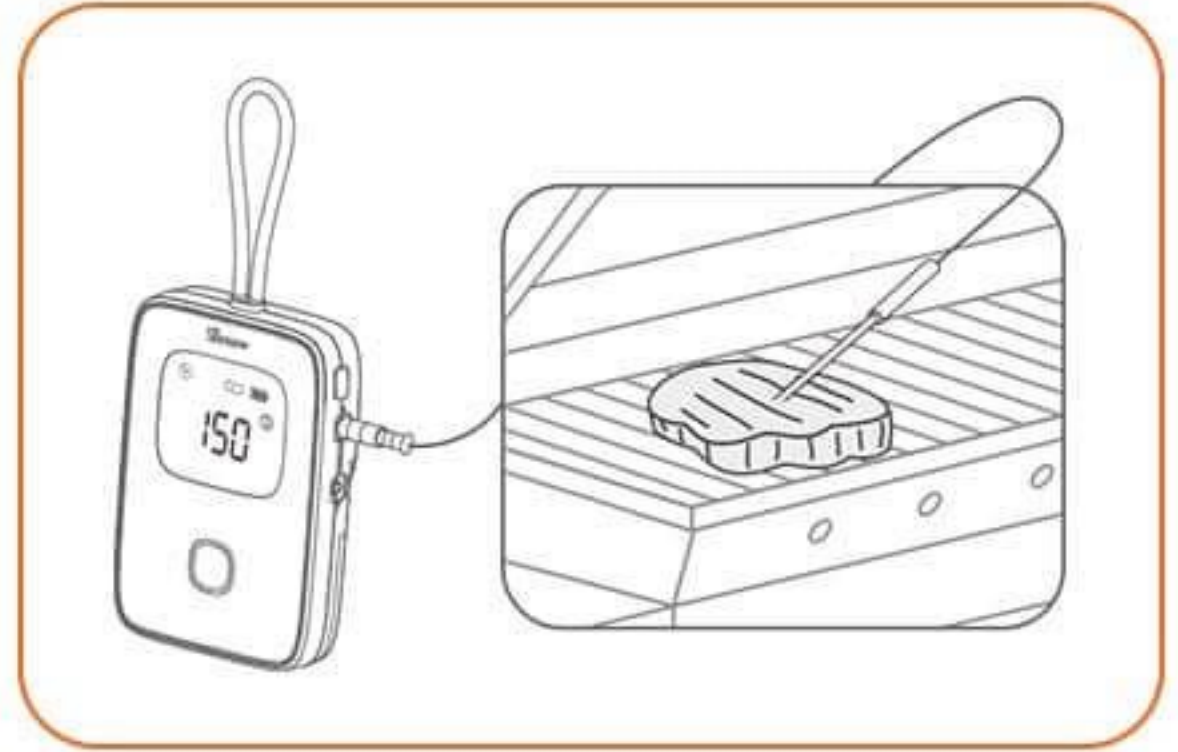


Quick Start

Basic using



Pull out the device battery insulation sheet to power the device.



The temperature is displayed after the probe is inserted.

Alert setting



Download the eWeLink App and scan the QR code



Set the Preset Temp. in the eWeLink App.

*Pairing with eWeLink is primarily for more functions and settings via the eWeLink app. These functions do not connect to the eWeLink cloud and support only local operations.

Package



Specification



Model
BMT01

Color
Black

Battery model
AAA (1.5V)

Input
3V \approx 0.1A(2*1.5VAAA Batteries)

Casing material
PC

Dimension
104.6x71.4x19.2mm

Working temperature
-10°C~55°C



Model
MPS01

Casing material
SUS304

Working temperature
0~300°C/32~572°F

Working humidity
5~95%RH, non-condensing

Probe length
15cm

Total length
1.5m

Compatible product
BMT01