



19" Rear Mount Touchmonitor

Model: TM-1949

Features

- Rear Mount
- Slim profile with unique narrow border
- Multiple mounting options :
 - Rear-mount VESA mounting option and removable wing bracket for VESA
- Detachable cables for easy cable harnessing
- Single power supply for all optional devices
- Multilingual and detachable On Screen Display (OSD)
- Combo Serial and USB touch interface
- Super-sensitive, drift-free, precise touch with no overlay
- Long-lasting product cycle
- Worldwide agency approvals



19" Rear Mount Touchmonitor

TM-1949



Leadingtouch Rear Mount LCD's touchmonitors are designed for easy integration into kiosk, gaming machine, industrial enclosure and other installations where compact, touch-integrated display are preferred. TM-194 series integrate the Leadingtouch's IP65 Level SAW, Resistive, Capacitive touchscreen, TM-194 series is Dustproof and Waterproof touchmonitors.

TM-194 series are designed for space saving and easy mounting integrations. The rear-mount configuration along with optional side mounting brackets would enable you to easily customize into kiosks, cabinets, in-wall as well as other enclosures.

TM-194 series will have leadingtouch Combo controller with dual touch ports for convenience and flexibility. It will enable to you use both the Serial RS-232 as well as USB port for your touchscreen application.

Product Information

P/N	Touch Technology
TM-1949	SAW waterproof touchscreen
TM-1947	Capacitive touchscreen
TM-1944	4 Wire Resistive touchscreen
TM-1945	5 Wire Resistive touchscreen

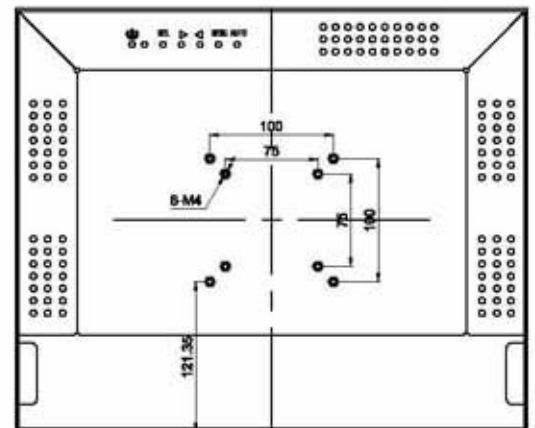
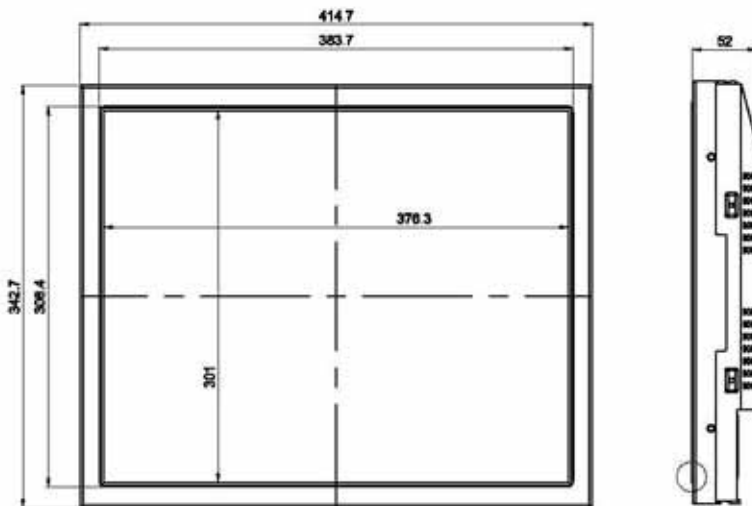
Specifications

Model	TM-1949
Description	19" TFT Rear Mount Touchmonitor
Case/Bezel Color	Black
Display	4 : 3 Active matrix TFT LCD
Optimal (native) resolution	1024 x 768 @60Hz
Synchronization Range	376.1mm x 301mm
Useful screen area	Horizontal: 13.3" (338 mm); Vertical: 10.6" (270.3 mm)
Colors	16.7 million
Brightness	LCD panel: 300 cd/m2 (typical) with SAW Touchscreen: 280 cd/m2 (typical)
Pixel Pitch	0.294 x 0.294 mm
Response Time	8 ms (Typically)
Contrast ratio	800:1 typical
Viewing angle (typical, from center)	Horizontal (left/right): 160°(80°/80°) Vertical (up/down): 170°(85°/85°)
Backlight Lamp life	50000 Hrs to 1/2 brightness
Input video format	VGA or DVI optional
Input video signal connector	Mini D-Sub 15-Pin VGA type
On Screen Display(OSD)	Remote OSD with 1.2m Cable
Touch Technology	SAW(Resistive,Capacitive Optional)
Touch Interface	Combo 232 and USB interface
Touch Resistive Time	10ms
Touch Sensitivity	Fixed
Mounting Options	Real Mount VESA 75 & 100mm
Power supply	External:100-240VAC,50-60 Hz
Power Consumption	50 Wmax
Temperature Range	Operating: 0°C to 50°C; Storage: -20°C to 60°C
Humidity Range	Operating: 10%-90%;Storage: 5%-90% no condensing
Touchmonitor Dimension	414.7X342.7X52(mm)
Shipping Carton Dimension	515x450x175 (mm)
Weight(approx.)	touchmonitor:4.6kg /Shipping:7kg
Warranty	Monitor: 3 years* LCD Panel: 1 year
Agency Approvals	FCC,CE, RoHS compliant

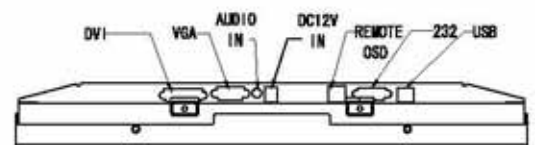
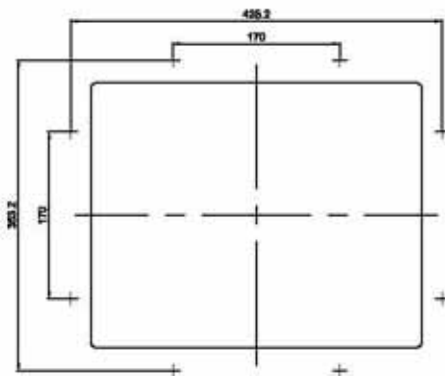


19" Rear Mount Touchmonitor

TM-1949

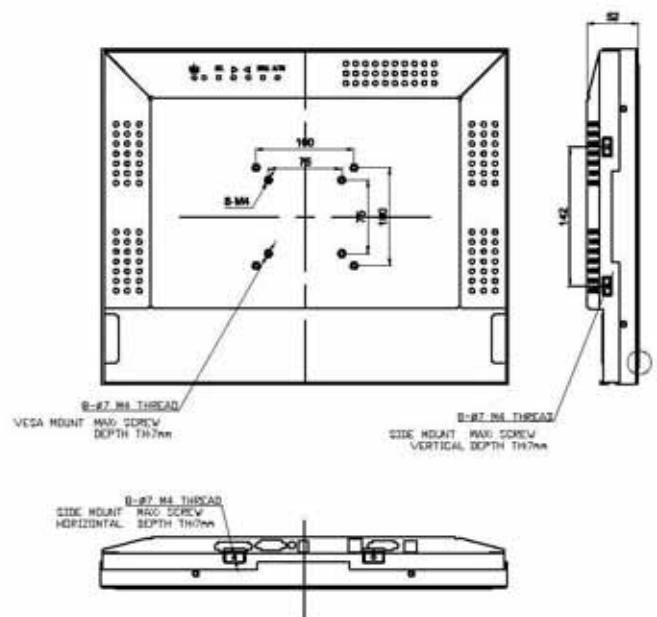
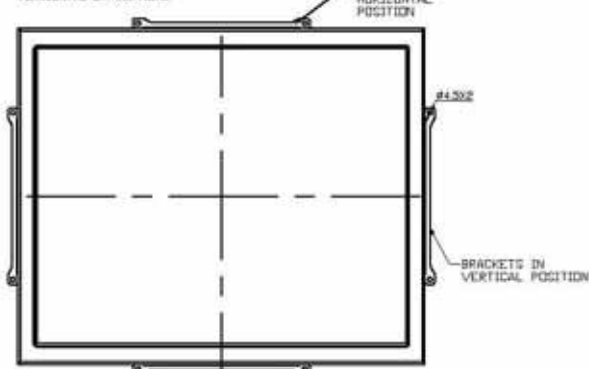


RECOMMEND CUSTOMER PANEL CUT-OUT



REAR MOUNT WITH BRACKETS
HORIZONTAL OR VERTICAL

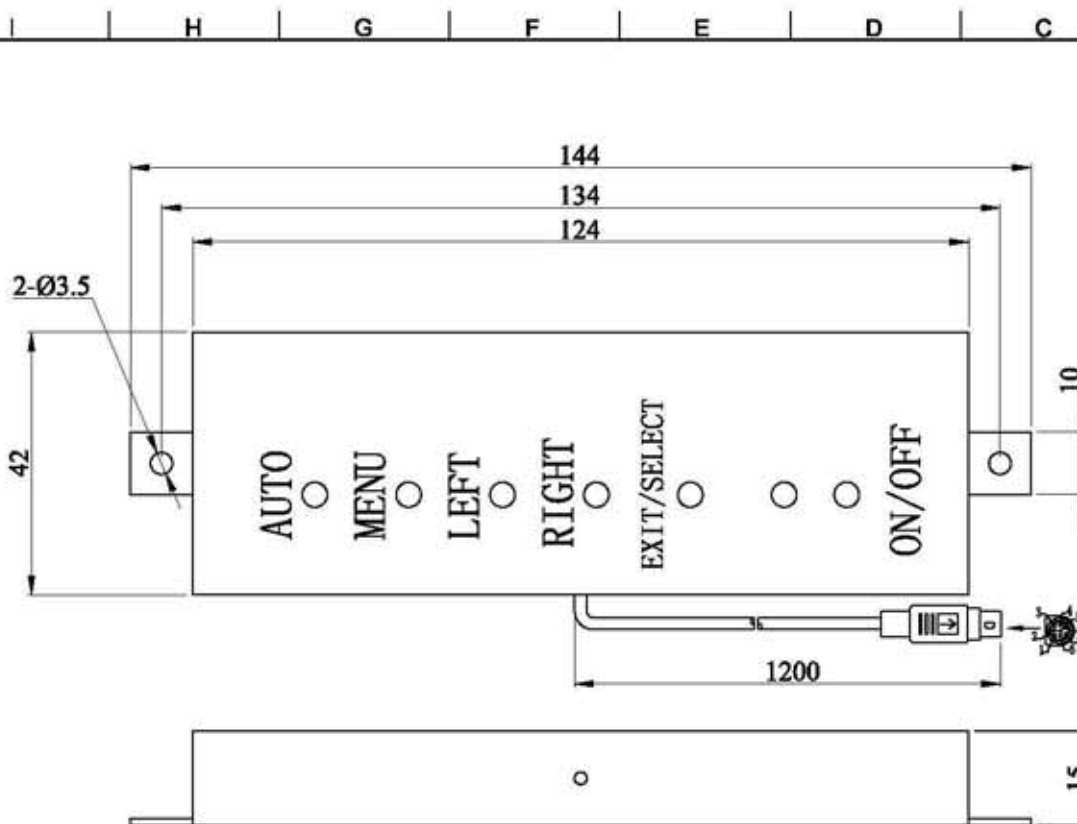
BRACKETS IN
HORIZONTAL
POSITION



19" Rear Mount Touchmonitor

TM-1949

Optional Accessory: Remote OSD Controller Box



SIGNAL DEFINITION	
PIN NO.	SIGNAL NAME
1	EXIT/SELECT
2	MENU
3	LEFT
4	GREEN LED
5	ON/OFF
6	RIGHT
7	RED LED
8	AUTO

NOTES:
1. ALL DIMENSIONS ARE IN MILLIMETERS.

						Leading Touch		MODEL TM-OSD	PROJECTION
						DESCRIPTION Remote OSD Controller Box		SIZE: A4	
						MATERIAL		SCALE 1:1	
						FINISH		WEIGHT: Kg	
								COLOR:	
						DO NOT SCALE DRAWING UNLESS OTHERWISE SPECIFIED ALL DIMENSIONS ARE IN MILLIMETERS TOLERANCES ARE: LINEAR TOL: XX±0.5 ANGULAR TOL: ±1°			
REV.	DESCRIPTION	DATE	DRAW	CHECK	APPROVE	DRAWING NO.		SHEET 1 OF 2	REV. AD