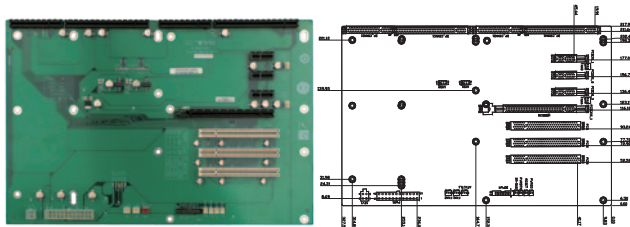


PE-8S-R40

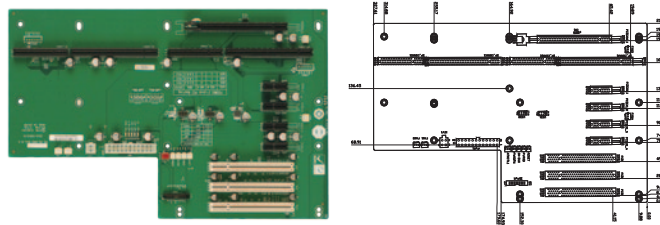


Ordering Information

PE-8S-R40	8-slot backplane with one PCIe x16 slots, three PCIe x1 slots and three PCI slots
PAC-125G	10-slot full-size compact chassis

PE-9S-R40

Mounting holes compatible with PCI-10S2

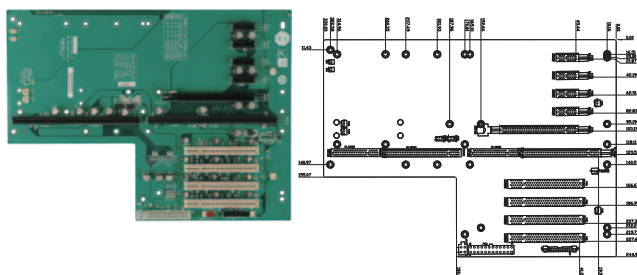


Ordering Information

PE-9S-R40	9-slot backplane with one PCIe x16 slot, four PCIe x1 slots and three PCI slots
-----------	---

PE-10S-R40

Mounting holes compatible with PCI-14S

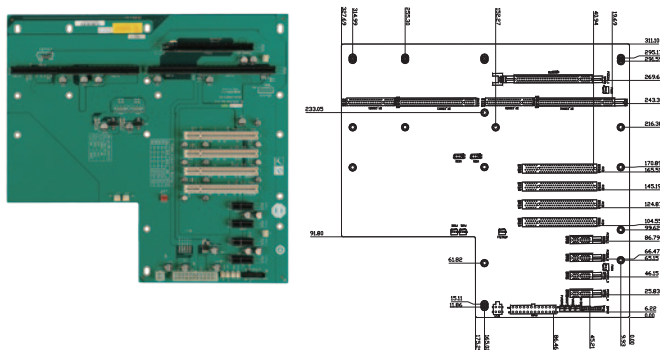


Ordering Information

PE-10S-R40	10-slot backplane with one PCIe x16 slot, four PCIe x1 slots and four PCI slots
RACK-305G	4U 14-slot full-size rack-mount chassis
RACK-360G	4U 14-slot full-size rack-mount chassis
RACK-3000G	4U 14-slot full-size rack-mount chassis

PE-10S2-R40

Mounting holes compatible with PCI-14S



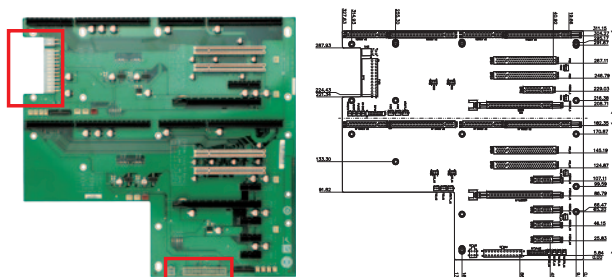
Ordering Information

PE-10S2-R40	10-slot backplane with one PCIe x16 slot, four PCIe x1 slots and four PCI slots
RACK-3000G	4U 14-slot full-size rack-mount chassis
RACK-305G	4U 14-slot full-size rack-mount chassis
RACK-360G	4U 14-slot full-size rack-mount chassis

PE-13SD-R40

Mounting holes compatible with PCI-14S

Dual system



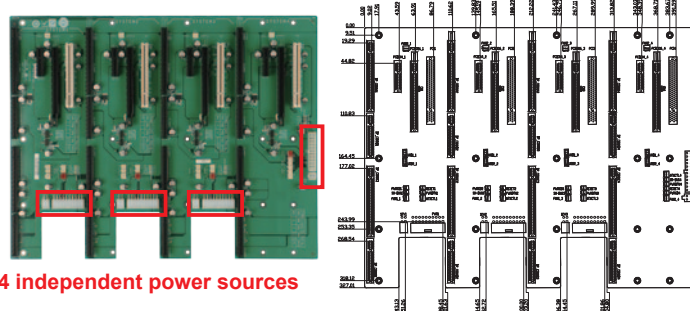
2 independent power resources

Ordering Information

PE-13SD-R40	13-slot backplane with two PCIe x16 and one PCIe x4 and four PCIe x1 and four PCI slot
RACK-3000G	4U 14-slot full-size rack-mount chassis
RACK-305G	4U 14-slot full-size rack-mount chassis
RACK-360G	4U 14-slot full-size rack-mount chassis

PE-16SQ-R10

Quad system



4 independent power sources

Ordering Information

PE-16SQ-R10	4-system backplane with each system having one PCIe x16 slot, one PCIe x4 slot and one PCI slot
-------------	---

1
Industrial
Computing
Solutions2
Video
Capture
Solutions3
Embedded
Computing
Solutions4
Automation
Control5
ORing
Network
Communication6
Power Supply/
Peripherals7
Panel
Solutions
Introduction